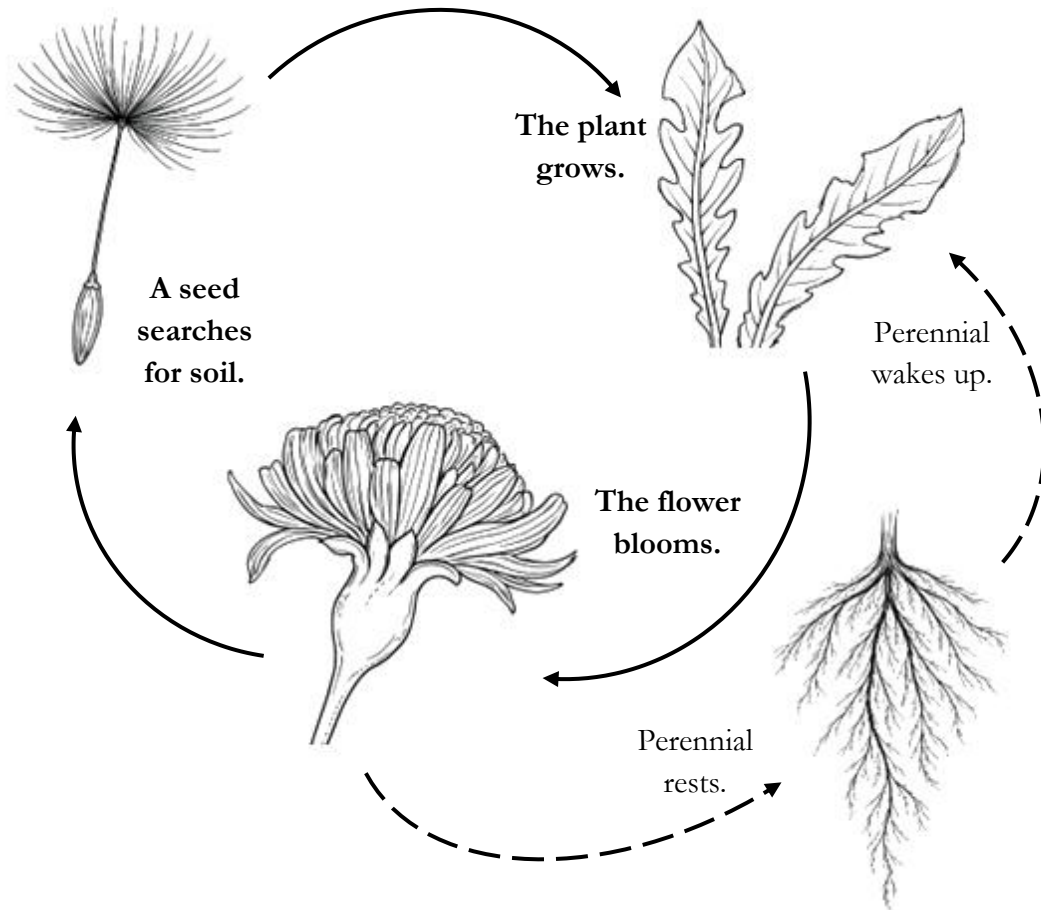


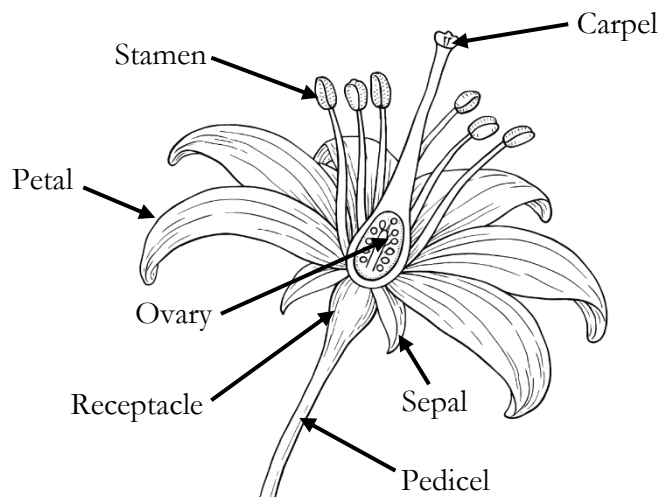
# Flower Life Cycle

Trace the arrows with your finger as you follow the flower's journey!  
*Annuals* complete their life in one year. *Perennials* live for multiple years.



## Flower Anatomy

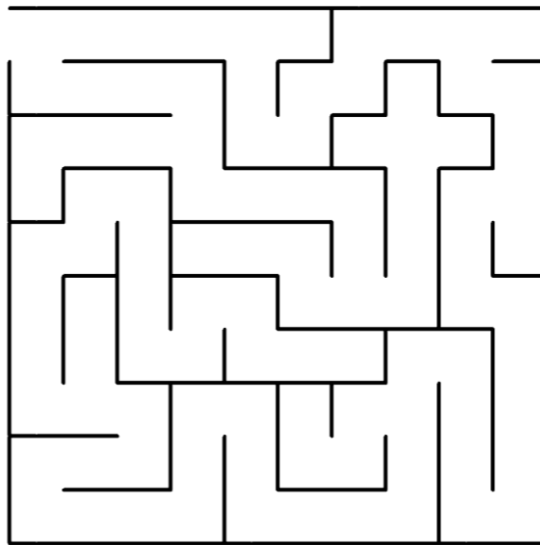
Color each part as you learn about it!



Carpel – catches pollen  
Stamen – makes pollen  
Petal – attracts pollinators  
Ovary – holds seeds  
Sepal – protects the bud  
Receptacle – the base  
Pedicel – the stem

# Maze

Help Orange Flower reach the Mountain!



# Word Search

BIRD CLIMB DREAM FIELD FLOWER FOX MOUNTAIN ORANGE STARS

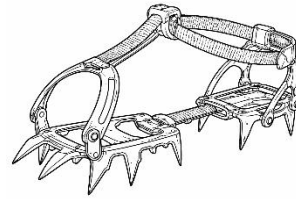
F	L	O	W	E	R	H	K	P	M
I	A	B	C	D	E	O	G	H	O
E	J	K	L	M	N	R	B	Q	U
L	P	Q	F	O	X	A	I	S	N
D	T	U	V	W	Y	N	R	Z	T
A	B	C	D	E	F	G	D	H	A
S	T	A	R	S	J	E	K	L	I
N	P	Q	R	S	T	U	V	W	N
X	C	L	I	M	B	Y	Z	A	B
C	D	D	R	E	A	M	E	F	G

# Connect the Pairs

Based on the definition of each mountain climbing term, draw a line to the matching picture.

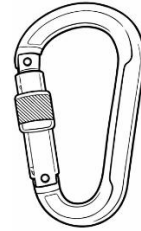
## Anchor

*What you attach your rope to at the top of a climb: could be a rock, a bolt, or special gear.*



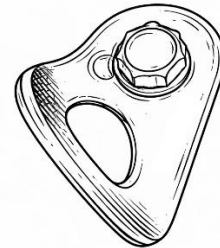
## Carabiner

*A strong metal clip used to connect ropes and gear.*



## Crampon

*Metal spikes that strap onto boots for walking on ice.*



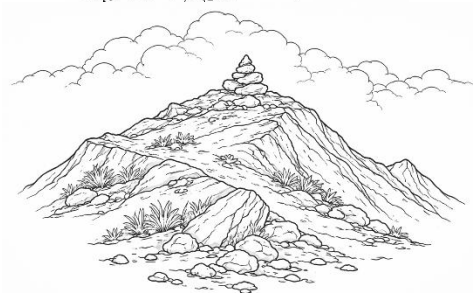
## Glacier

*A huge, slow-moving mass of ice found on some mountains. Can look like tongues!*



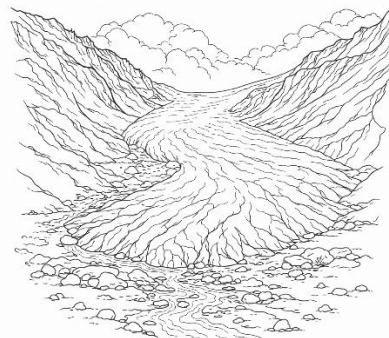
## Summit

*The very top of a mountain.*



## Switchback

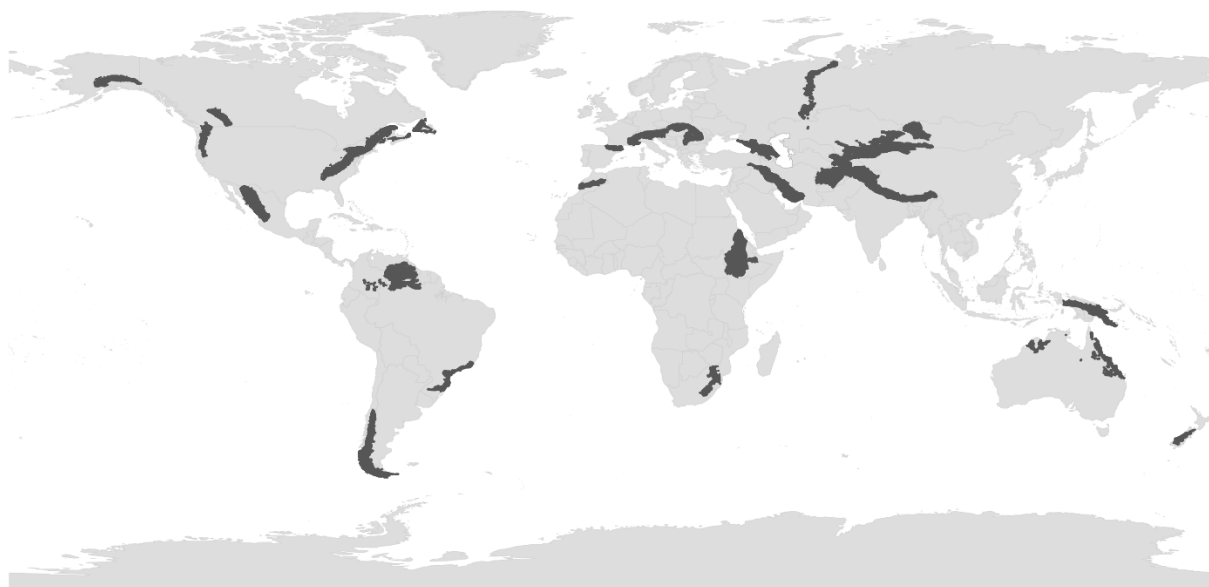
*A trail that zigzags up a steep slope instead of going straight.*



# World Mountains

Mountains are tall, steep landforms that rise to a peak at least 2,000 feet above the land around. There are hundreds of mountain ranges around the world, from hot deserts to frozen peaks. Mountains form in different ways: some are pushed up when pieces of Earth's crust crash together, others grow from volcanoes, and some are left behind when softer rock around them wears away. As you climb higher on any mountain, it gets colder and windier, creating different zones. These zones support all kinds of plants and animals, including some that can't live anywhere else on Earth. In many regions, mountains catch rain and snow that feeds rivers below.

**Check the map below, which has *some* of the world's major mountain ranges. Which mountains are closest to where you live? Are any mountains near your home missing? Draw them in!**



Mountain geospatial data from: Snethlage et al. (2022). *Scientific Data* 9:149. doi:10.1038/s41597-022-01256-y and Snethlage et al. (2022). *GMBA Mountain Inventory v2*. doi:10.48601/earthenv-t9k2-1407.

## Coloring

Orange Flower got help from different folks to achieve her dream. Can you think of a time you gave or received help?

