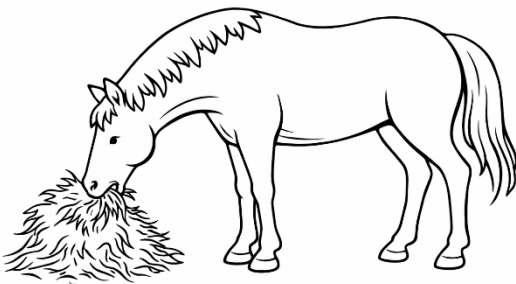


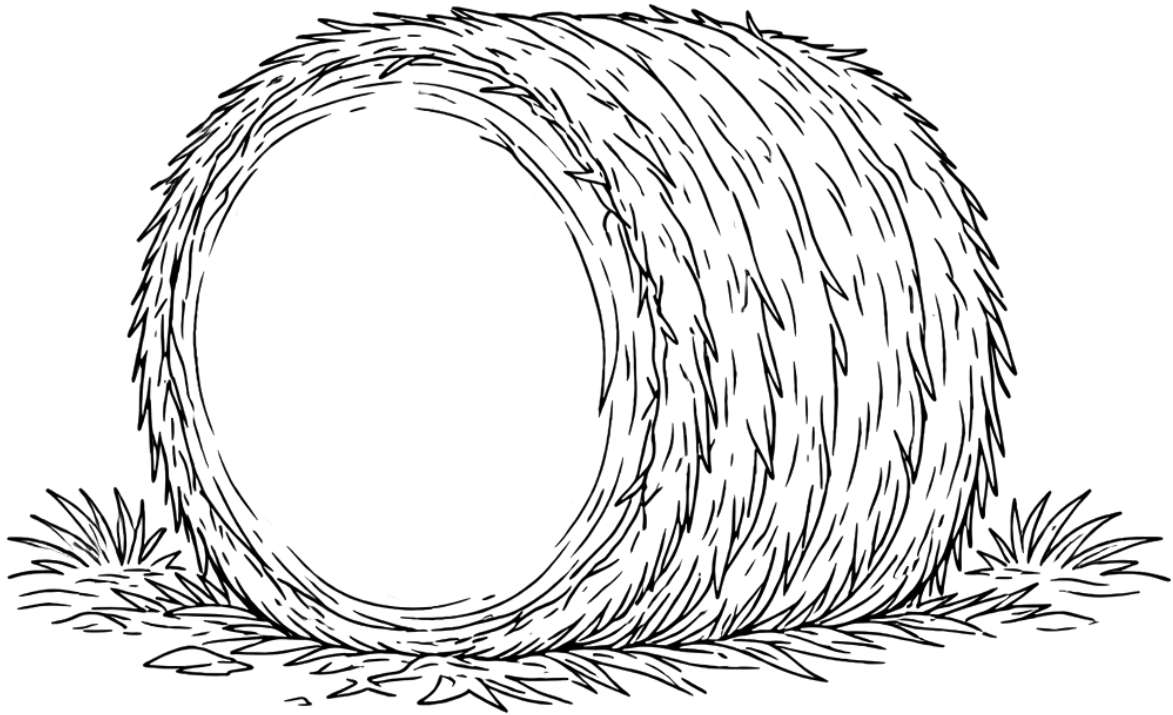
## LIFE OF A BALE

Draw arrows showing the right order.



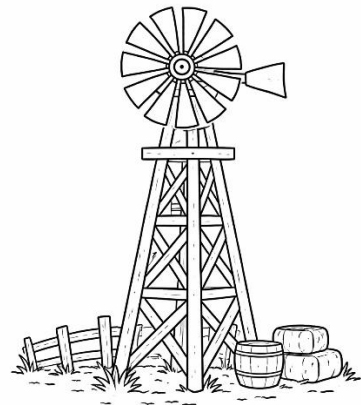
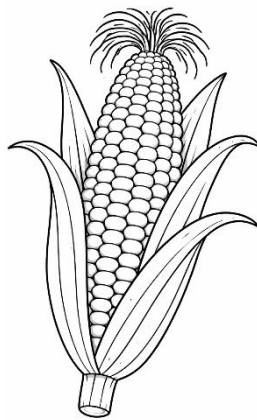
**FACE**

Draw a silly face on this hay bale!

**Names**

All animals have two names: a common name and a scientific name. The common name is what we call them in our everyday speech. Scientific names have two parts, a genus and a species. For example, domestic horses (common name) are *Equus caballus* (scientific name). Scientific names often end in *-us* because they are in Latin.

Come up with funny scientific names for these farm "creatures!"  
For example, a horse might be a *Runnus fastimus*!

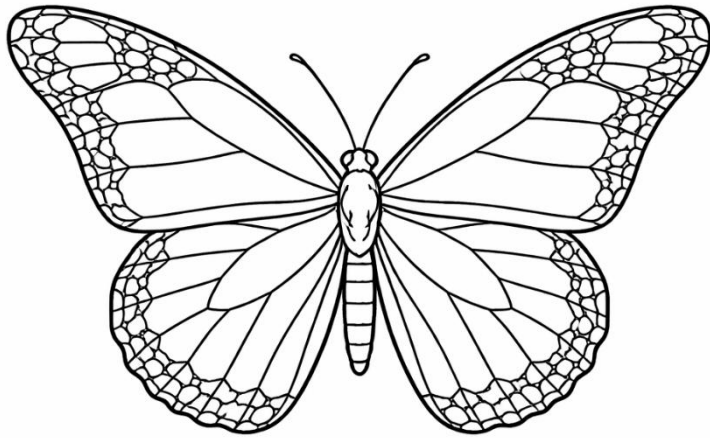


---

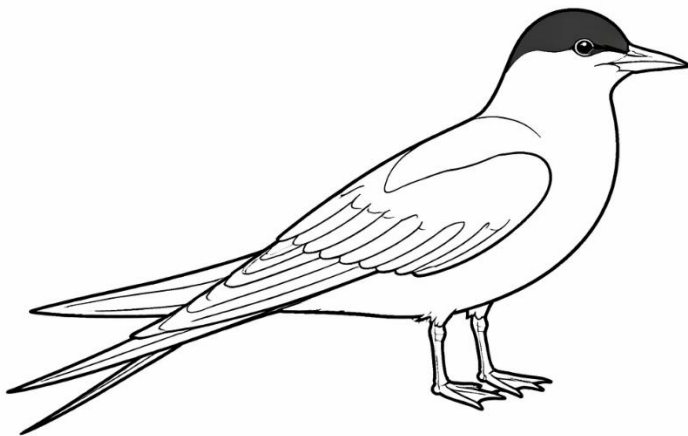
---

---

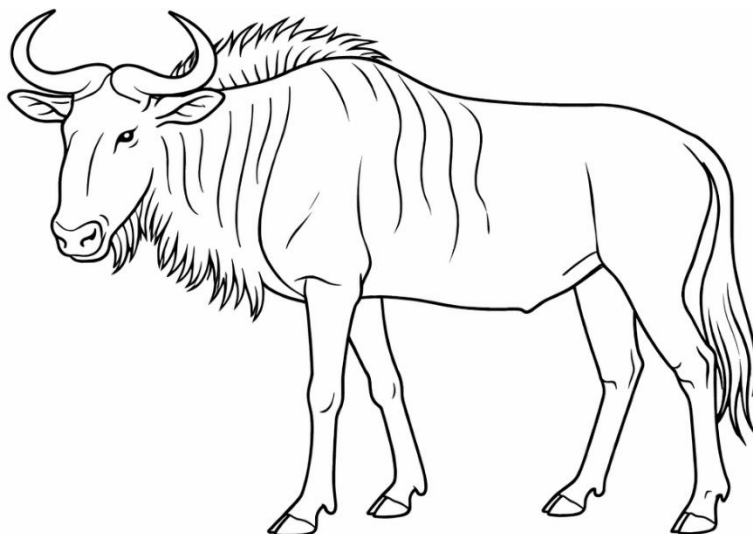
**MIGRATION** A **migration** is the seasonal movement of animals from one region to another. For example, some animals migrate to warmer places during winter. **Color these animals that migrate!**



**Monarch butterfly** migrations cover over 2,000 miles in the Americas. A single long-lived “super generation” makes the whole trip south for winter, but the return trip north takes 3-4 generations of shorter-lived butterflies.



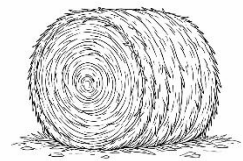
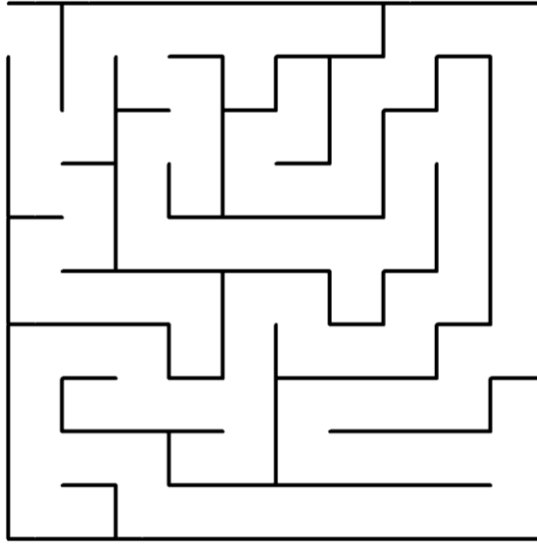
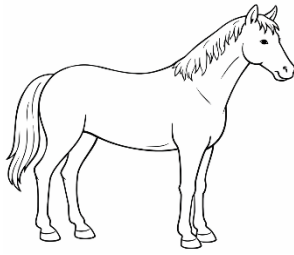
The **arctic tern** makes the longest migration of any animal on Earth, flying from the Arctic to Antarctica and back each year—a round trip of up to 44,000 miles!



More than 1.5 million **wildebeest** migrate in an enormous loop through Africa every year, following the rains to find fresh grass.

## MAZE

Help this horse get to the hay bale!



## WORD SEARCH

COW

FALL

FARM

FIELD

GRASS

GRAZE

HAY

HORSE

H	O	R	S	E	B	T	K	P	L
A	D	M	N	Q	V	W	X	J	U
Y	C	I	O	P	G	R	A	S	S
R	E	K	L	M	R	N	O	P	Q
B	F	A	R	M	A	S	T	U	V
D	G	H	I	J	Z	K	L	M	N
F	I	E	L	D	E	O	P	Q	R
S	T	U	V	W	X	Y	C	O	W
A	F	A	L	L	B	C	D	E	F
G	H	I	J	K	L	M	N	O	P