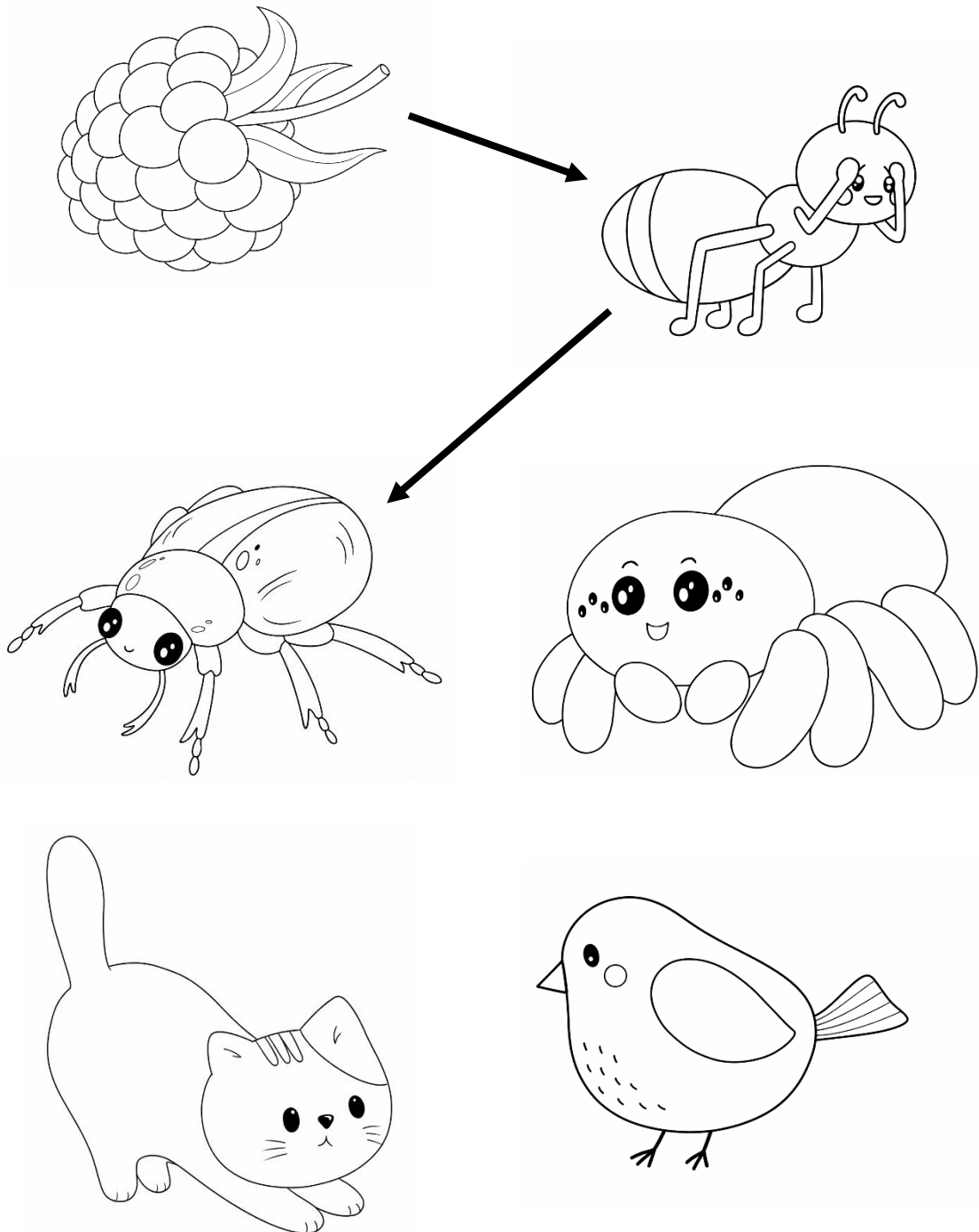


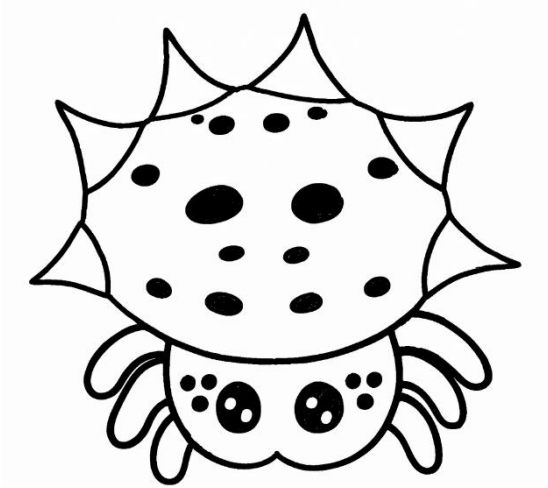
FOOD WEBS: A food web shows how plants and animals are connected by what they eat. For example, the blackberry is eaten by the ant.

Draw lines to show who gets eaten by who!

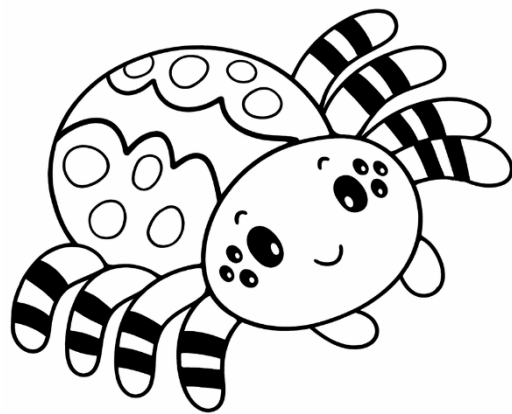


SPIDER SHAPES: Spiders have all kinds of colors and shapes.

Count the shapes on the spiders.

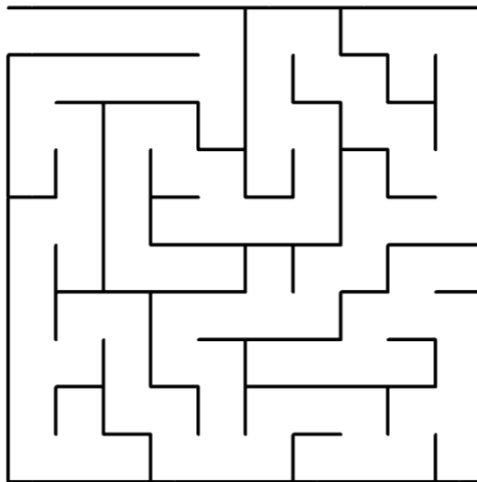
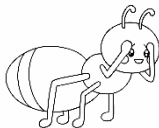


_____ △
_____ ●
_____ ●



_____ ■
_____ □
_____ ○

MAZE: Help the ant get to the blackberry!



READING & WRITING PRACTICE:

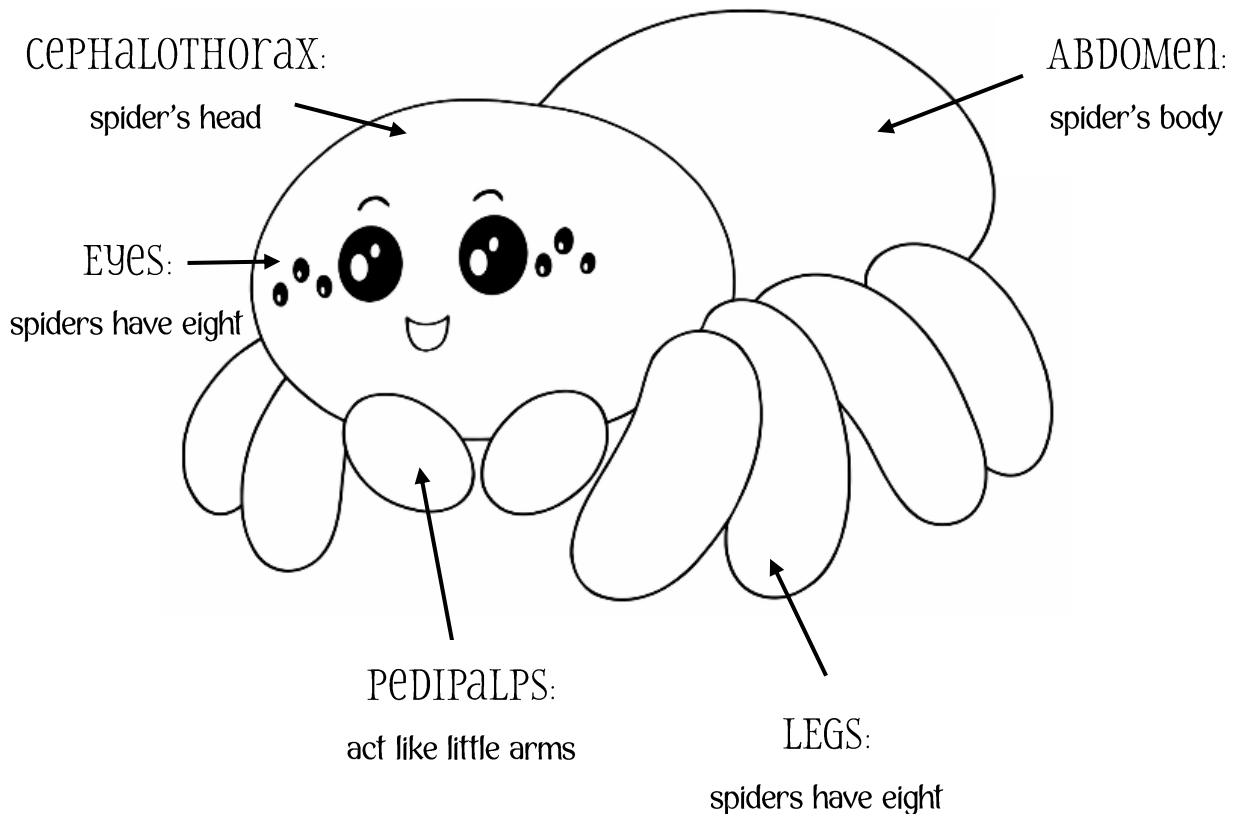
Trace and read the sentences. Then write your own!

The web got a big red bug.

Ten ants can dig a lot.

The fat cat had a nap.

SPIDER ANATOMY: Color the spider's different parts.



WORD SEARCH: Find the words.

ANT

BUG

CAT

FAST

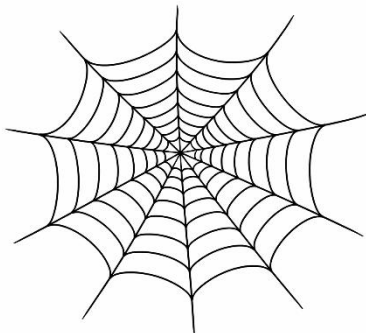
HUNT

WEB

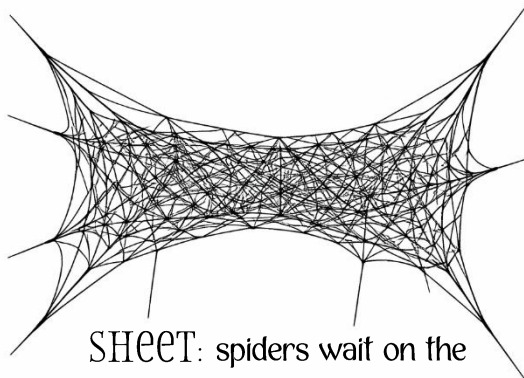
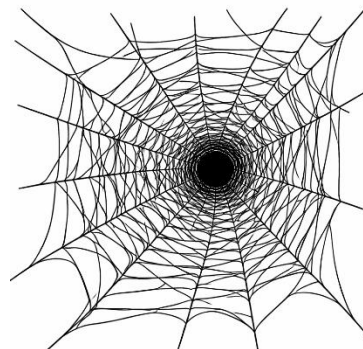
F	H	U	N	T	R	L	M
A	D	E	P	Q	I	J	K
S	C	A	T	V	X	Y	Z
T	O	W	E	B	G	R	P
L	M	N	O	A	N	T	Q
B	U	G	D	E	F	H	I
J	K	L	M	N	O	P	Q
R	S	V	W	X	Y	Z	A

WEB TYPES: Color the different kinds of spider webs.

ORB:
great for
catching
flying insects



FUNNEL:
spider waits
inside for prey
to pass near



SHEET: spiders wait on the
bottom for prey to land on the top

TANGLE: catches
insects that walk into
the web

